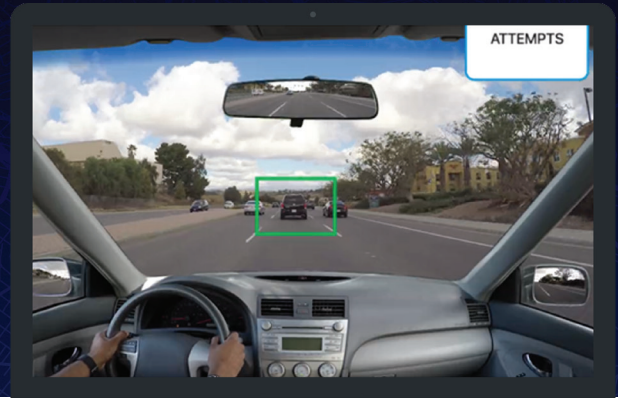


Research-validated predictive digital driver risk assessment tool

Borne out by 1M+ drivers around the world



66% of unsafe drivers who were assessed by on-road evaluations self-rated themselves as good drivers.¹ Are you willing to trust self-reporting to manage driver risk? With approximately **1.35 million people dying each year** from road crashes² and work-related motor vehicle crashes costing employers upwards of \$72.2 billion per year³, you can't afford to be reactive. **Proactively** assess your drivers and prioritize risk using RoadRISK.

¹Science Direct, Oct 2020

²World Health Organization, Feb 2020

³The Network of Employers for Traffic Safety (2021). Cost of Motor Vehicle Crashes to Employers, 2019

Full motion video hazard identification exercises help drivers demonstrate and practice recognizing road hazards in a timely fashion.



Multiple interactive formats maintain driver engagement.

How It Works

The same validated risk assessment tool used by large global fleets in 125 countries is now available to organizations and fleets of all sizes as part of Mentor by eDriving's award-winning, comprehensive driver safety and risk management program. Here's how it works:

1. RoadRISK first establishes a thorough Risk Profile based on personal information drivers supply including:
 - **Driver Detail:** Health, personality, type of professional driving, age, experience, tenure with company, driving habits, training taken, collision history, speeding violations, and more.
 - **Vehicle Detail:** Company vs. personal car, service record, mileage, age of vehicle, maintenance history, safety features, and more.
 - **Trip Detail:** Hours spent driving professionally & personally, types of roads and vehicles driven, work hours, schedule, miles driven, and more.
2. Because 94% of collisions and incidents are caused by driver actions, RoadRISK includes a critical, research-based, psychometric Defensive Driver Assessment with sections assessing driver Attitude, Behavior, and Knowledge. The Hazards section uses full motion video exercises to test drivers' ability to spot hazards in time to react properly
3. Based on the extensive input collected through the Risk Profile and Defensive Driving sections, drivers are classified as High, Medium, or Low risk.

Across most organizations, approximately 10% of fleet drivers are classified as "high risk". RoadRISK lets you identify and help these individuals before they get into trouble.

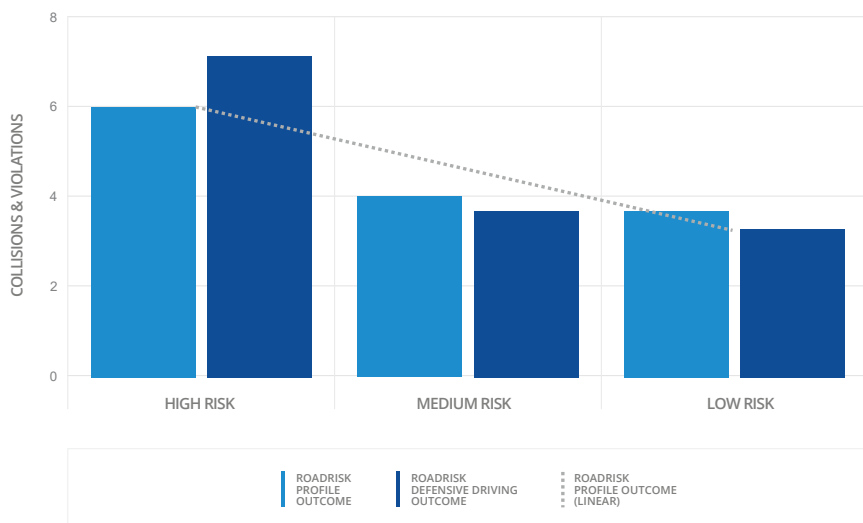
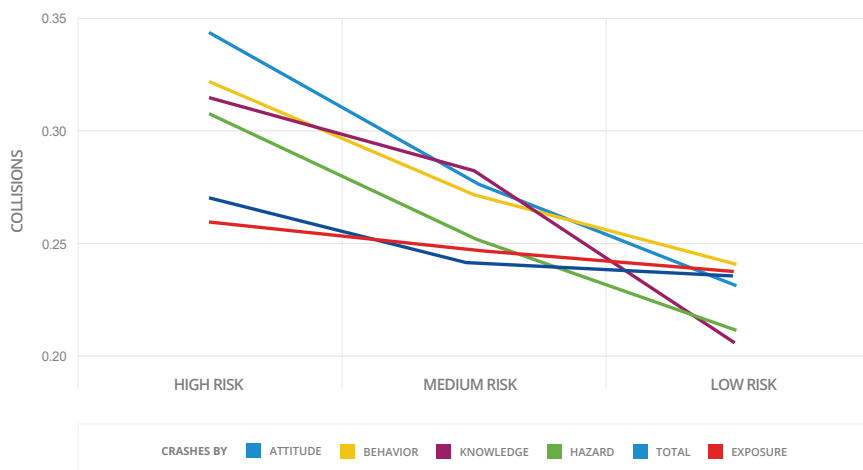
The Proven Science Behind RoadRISK

Groundbreaking evaluation research studies undertaken by university research teams in the UK showed clear statistical links between drivers' performance on the RoadRISK assessment and reported collision outcomes. These studies confirmed RoadRISK's ability to accurately predict a driver's risk and the related likelihood of incurring a collision.

To date, these remain the only large-scale driver risk assessment validation studies of their kind - conducted by applied university-level research experts with up to 26,000 participants at a time.

The graph at the top right, based on the 26,000-driver study, shows the clear relationship between driver collisions over the previous three years and assessment outcomes on each section of RoadRISK.

Since these original studies, additional evaluations have continued to validate RoadRISK's effectiveness. To the right are results for a group of commercial and company car drivers employed by a large logistics and express delivery operator.



The choice of industry leaders worldwide.

25+ years' experience
1,200,000+ active fleet drivers
125 countries

120+ client & partner awards
Privacy-first, data-secure environment
Large-scale validation studies